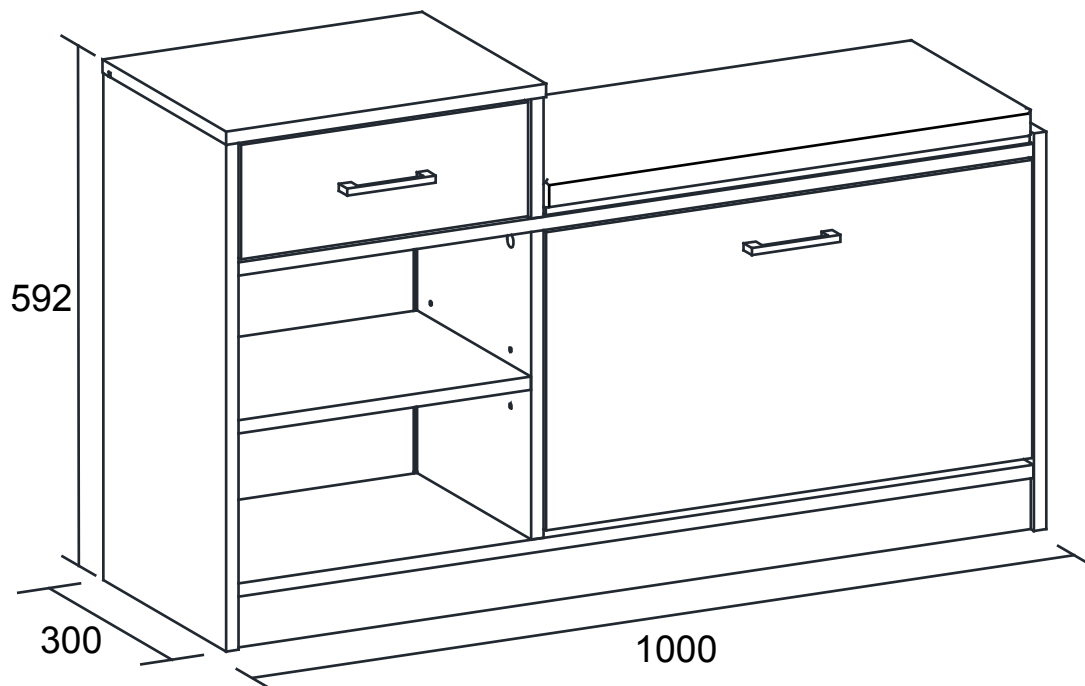


# SHOE BENCH STORAGE UNIT ASSEMBLY INSTRUCTIONS

Thank you for purchasing the **SHOE BENCH with DRAWER**. Please read the instructions carefully to ensure safe operation of the product.



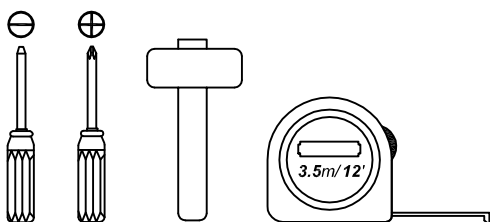
Size: (W)1000 x (D)300 x (H)592mm  
Colour : Oak / White / Walnut

**PLEASE READ** this sheet prior to assembly to familiarise yourself with the various stages of construction.

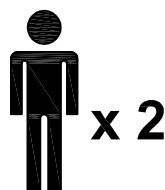
Carefully open the pack supplied and check the contents against the parts and fittings check list. Do not destroy any of the packaging until you are certain that you have all the necessary parts for the assembly.

**CAUTION:** There are small components used in the construction of this unit. These loose items should be kept away from young children whilst assembling your unit to avoid the danger of choking hazards.

## Tools Required



## Person Required



## Approximate Assembly Time



## **IMPORTANT - READ CAREFULLY - RETAIN THESE INSTRUCTIONS FOR FUTURE REFERENCE.**

### **INFORMATION**

- This product is intended for a maximum weight for SEAT to **100kgs**. Do not exceed this weight.
- Due to the size of this product we recommend that it is assembled in the room intended for use.
- When you are ready to start, make sure that you have the right tools, plenty of space and a clean, dry area for assembly.
- Unwrap all packaging materials and place the components on top of the carton box or on a clean floor to prevent it from scratching.
- Check the pack and make sure you have all the parts listed.
- Ensure that this product is fully assembled as illustrated before use.
- Check all screws or bolts are tightened and inspect regularly
- This product should only be used on firm, level ground.
- Keep small parts out of reach of children.
- Make sure the legs remain in contact with the ground.
- Tools not included.

### **WARNINGS**

- DO NOT use power tools to construct this product.
- DO NOT tighten screws until fully assembled.
- DO NOT over tighten screws or bolts.
- DO NOT use this product if parts are missing, damaged or worn.
- DO NOT stand on the product.

### **CARE INFORMATION**

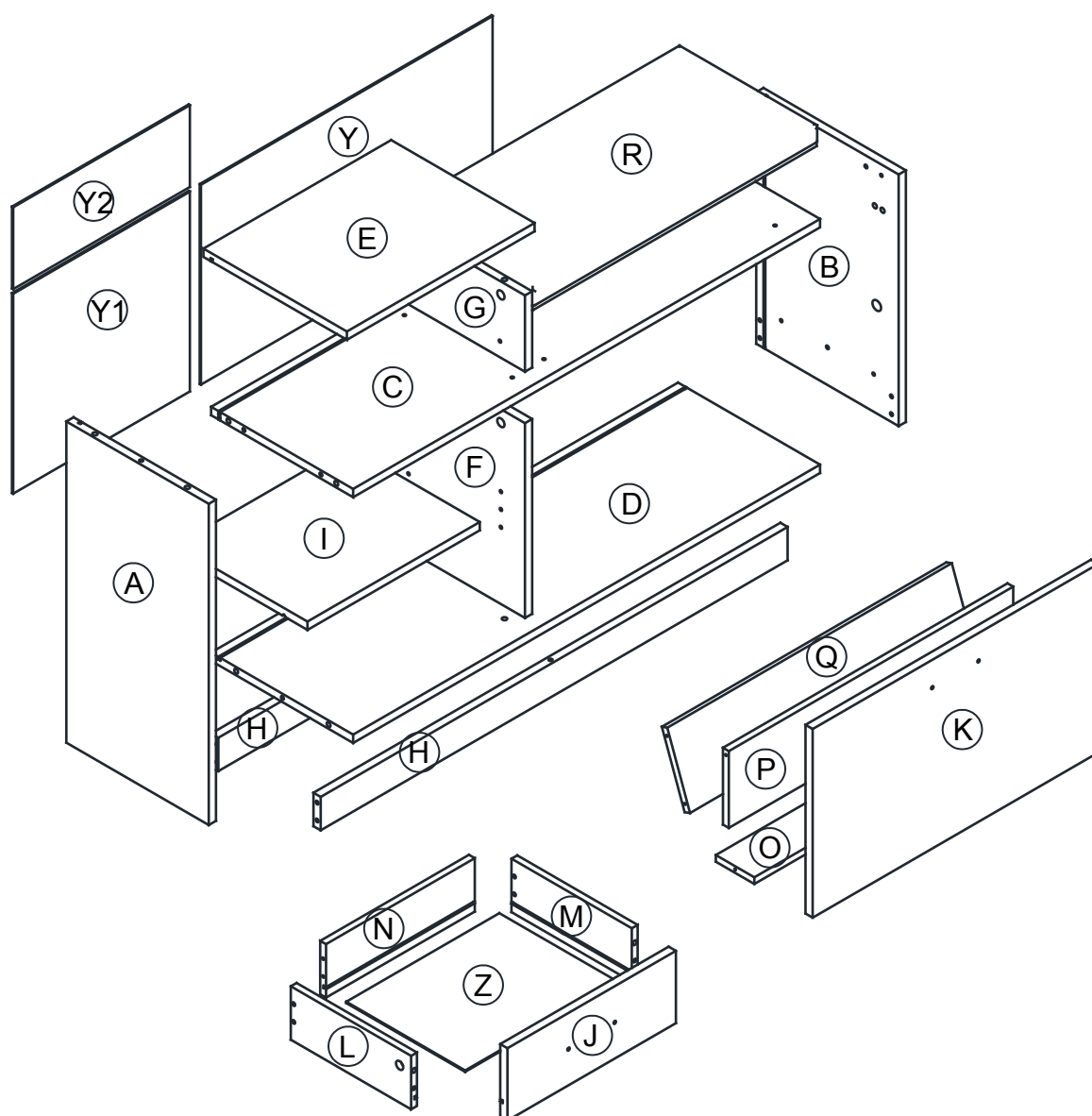
- Never use scourers, abrasives or chemical cleaners.
- To clean wipe with a sponge and warm soapy water. Do not use solvent based cleaners or detergents as they can bleach or damage the product.

Please check the pack contents before assembling the product. If any components are missing, please contact your retailer. The fittings pack contains small items that should be kept away from small children.

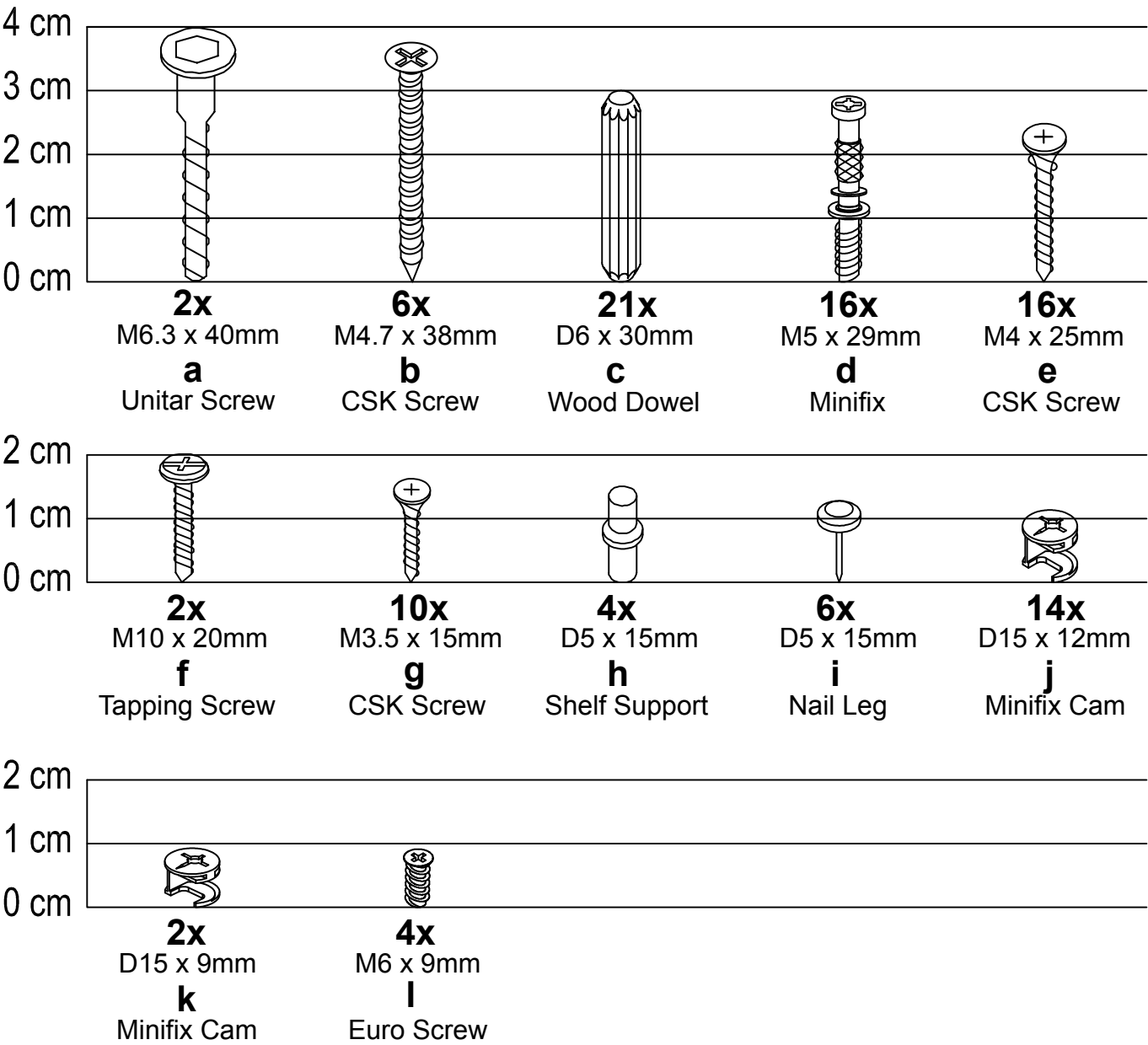
## Parts

CODE	PART NAME	QTY
A	Side Panel (L) 296 x 577 x 15mm	1
B	Side Panel (R) 296 x 452 x 15mm	1
C	Vertical Panel 295 x 970 x 15mm	1
D	Bottom Panel 295 x 970 x 15mm	1
E	Top Panel 298 x 390 x 15mm	1
F	Center Big Panel 294 x 350 x 15mm	1
G	Center Small Panel 294 x 137 x 15mm	1
H	Bottom Support Bar 60 x 970 x 15mm	2
I	Adjustable Shelf 274 x 358 x 15mm	1
J	Drawer Front 130 x 350 x 15mm	1
K	Shoe Drawer Front 338 x 593 x 15mm	1

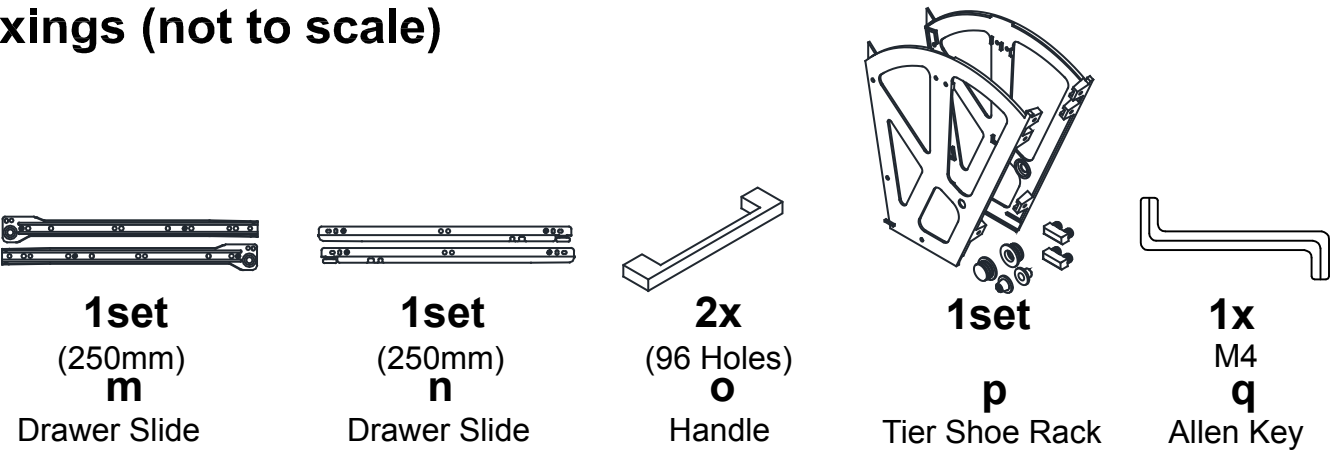
CODE	PART NAME	QTY
L	Drawer Side (L) 96 x 250 x 12mm	1
M	Drawer Side (R) 96 x 250 x 12mm	1
N	Drawer Back 96 x 309 x 12mm	1
O	Bottom Bar Shoe Drawer 80 x 587 x 12mm	1
P	Center Bar Shoe Drawer 138 x 587 x 12mm	1
Q	Back Bar Shoe Drawer 138 x 587 x 12mm	1
R	Cushion 285 x 590 x 9mm	1
Y	Back Panel 359 x 606 x 2.5mm	1
Y1	Back Panel Big 359 x 367 x 2.5mm	1
Y2	Back Panel Small 146 x 367 x 2.5mm	1
Z	Drawer Bottom 247 x 318 x 2.5mm	1

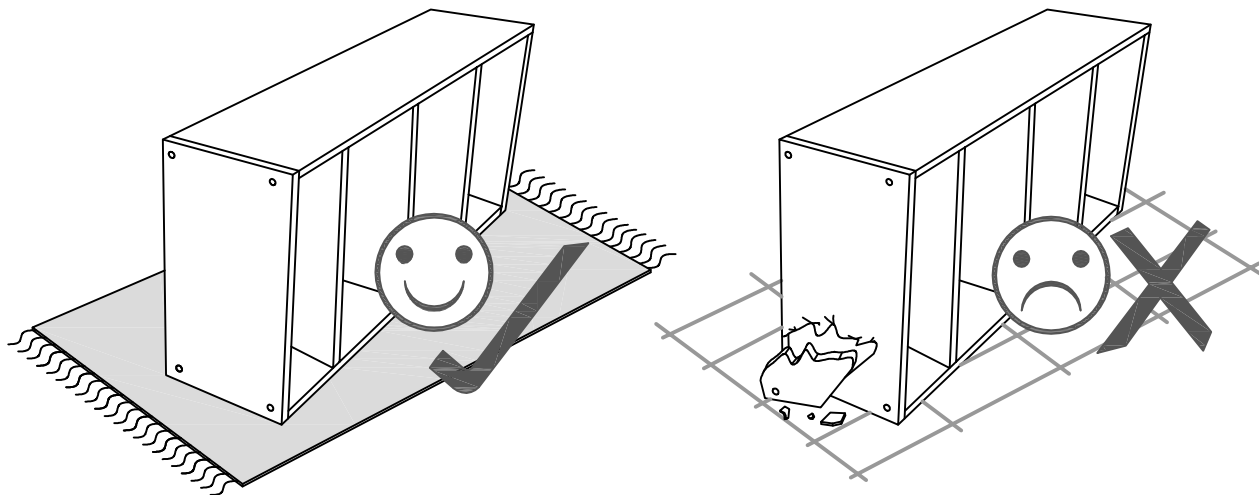


Fixings (to scale)



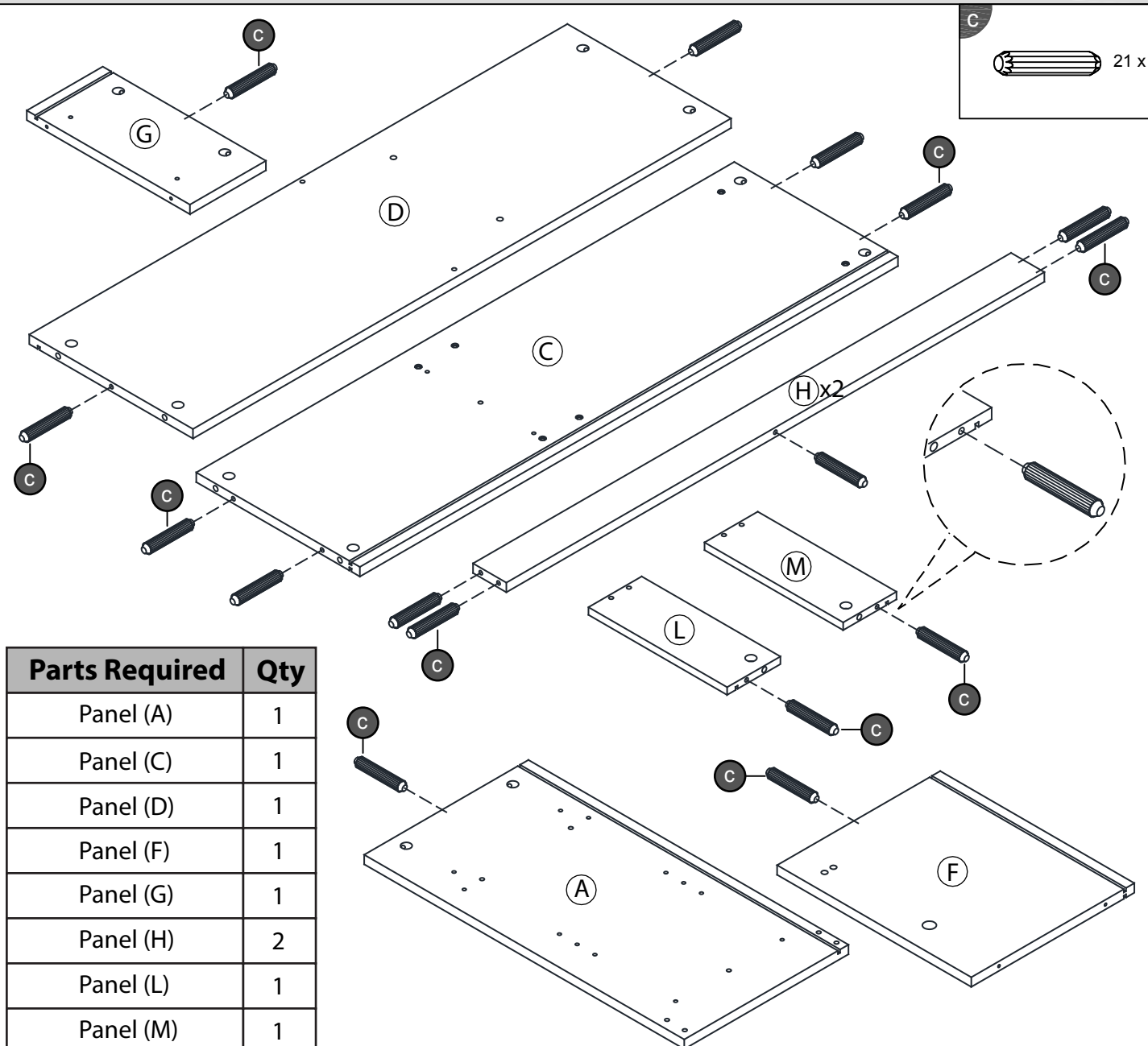
Fixings (not to scale)



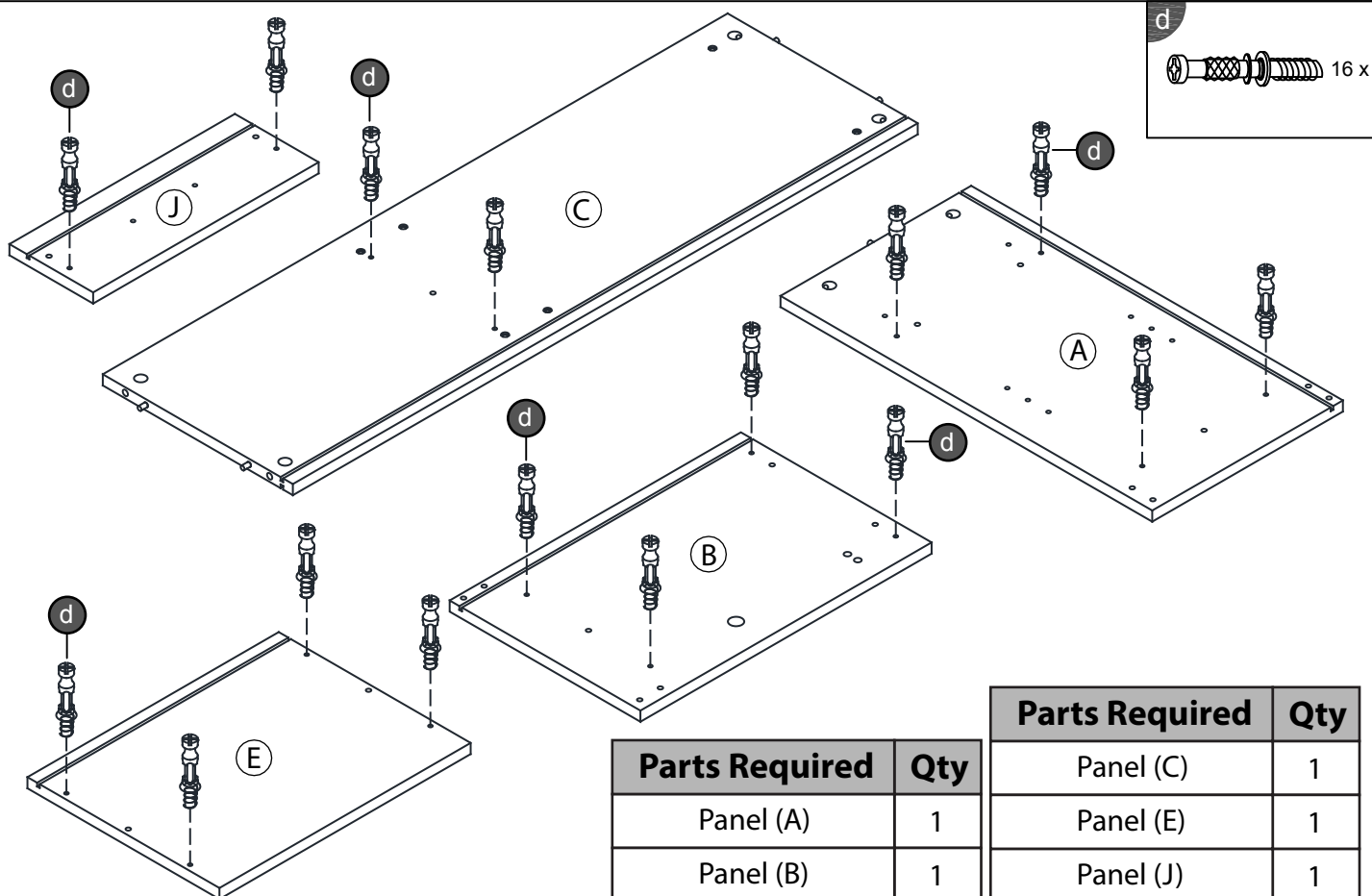


## Layout Parts on Soft Surface

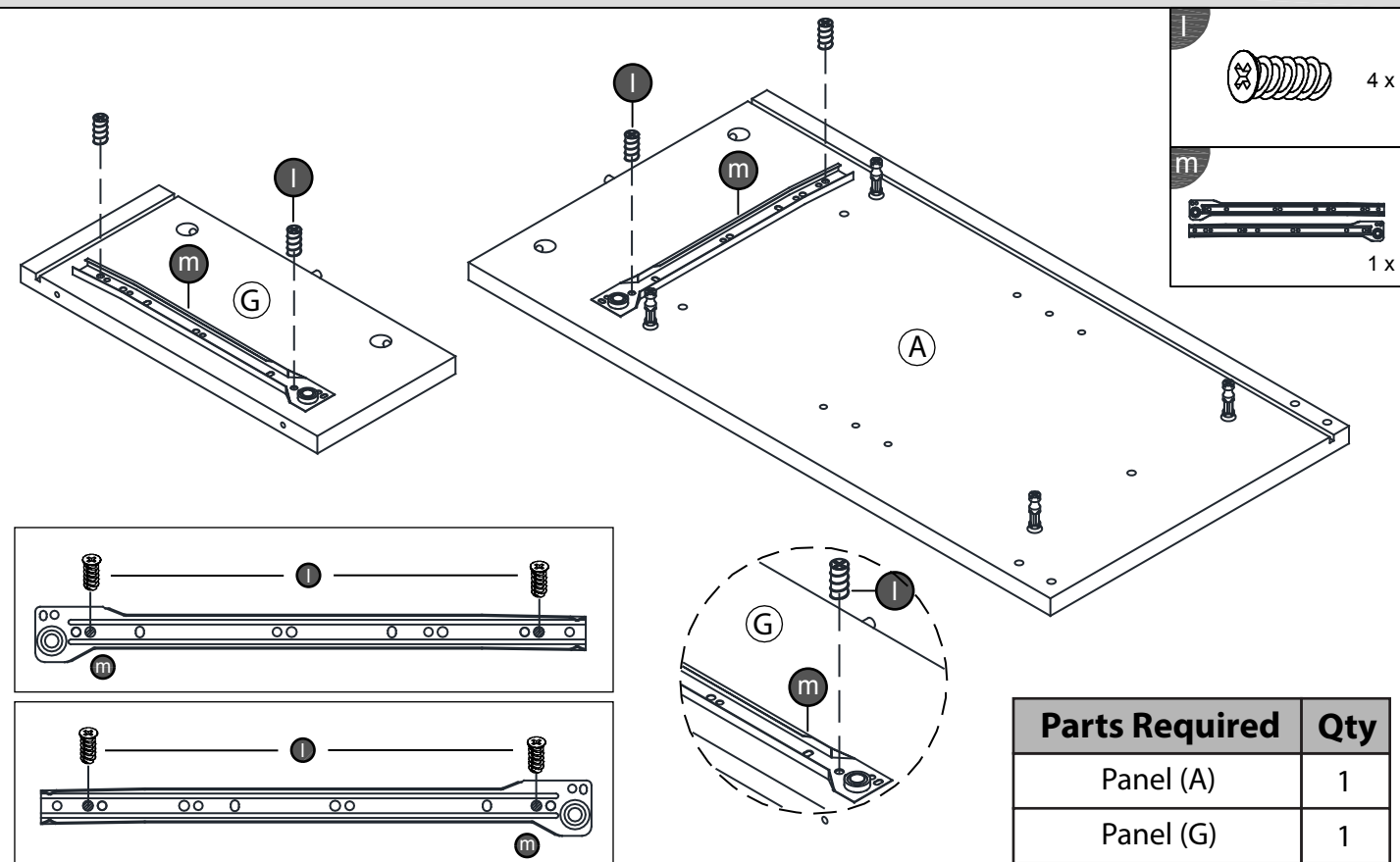
### STEP 1



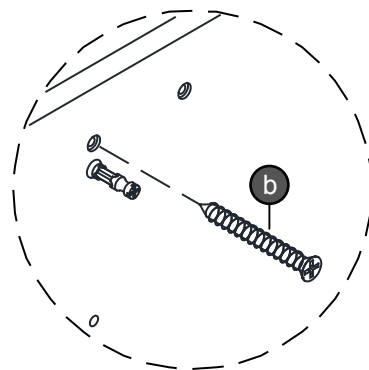
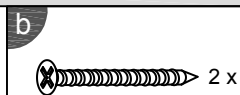
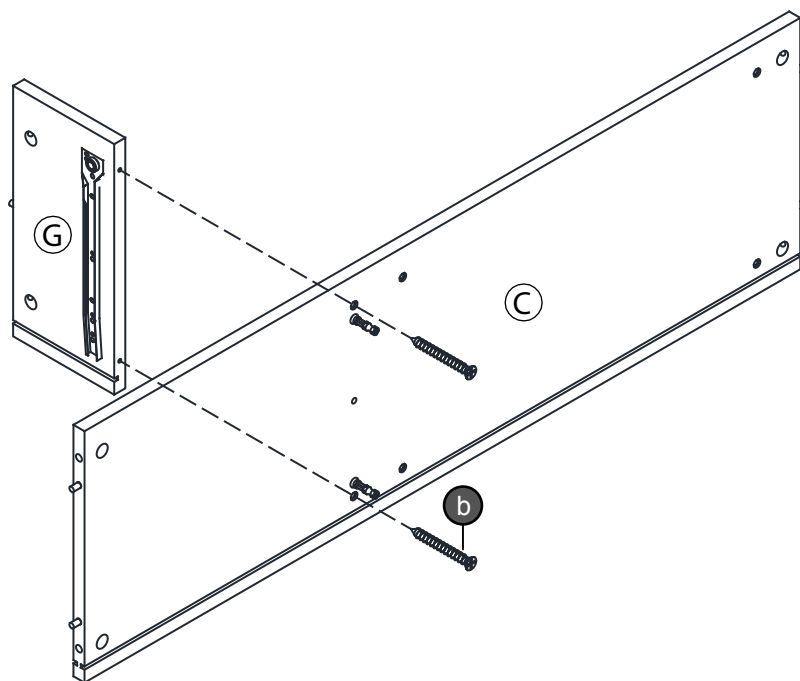
## STEP 2



## STEP 3

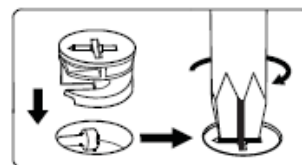
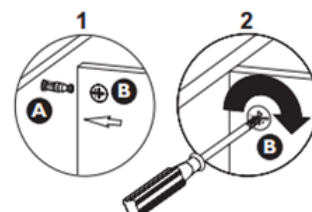
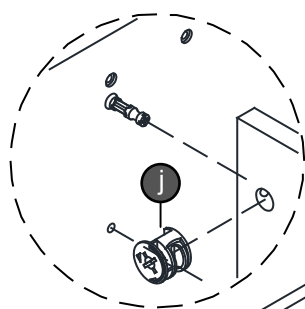
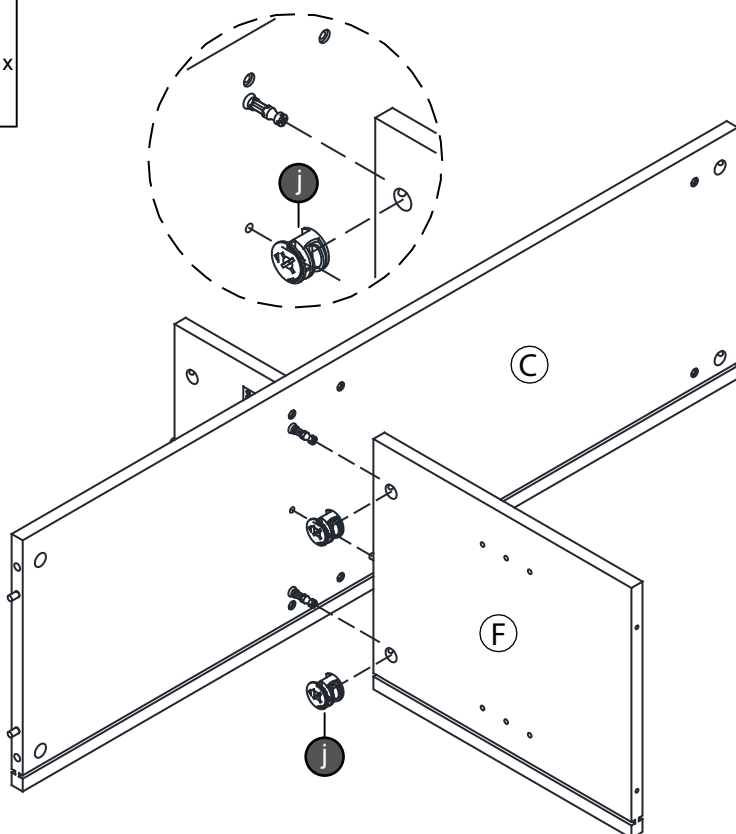
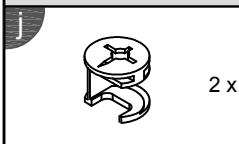


# STEP 4



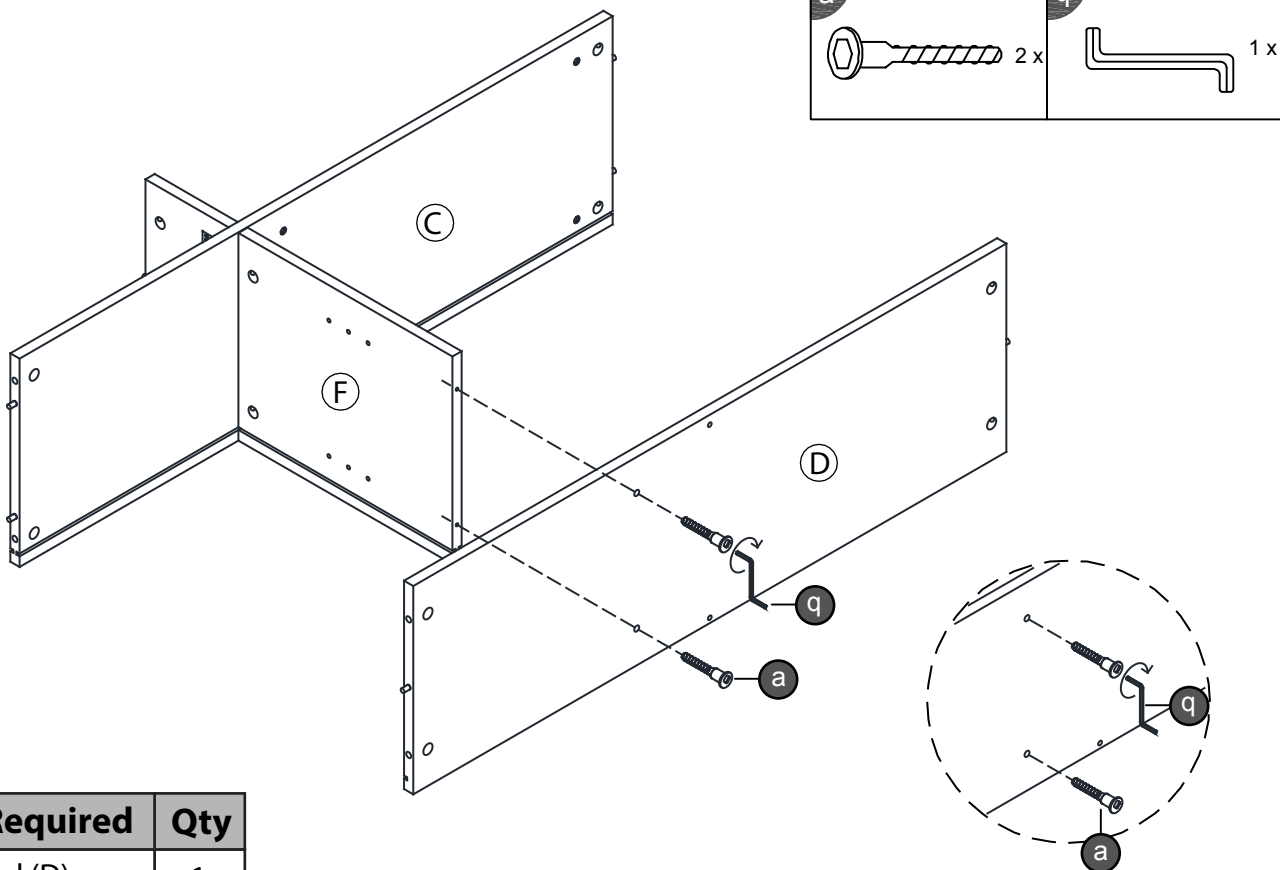
Parts Required	Qty
Panel (C)	1
Panel (G)	1

# STEP 5

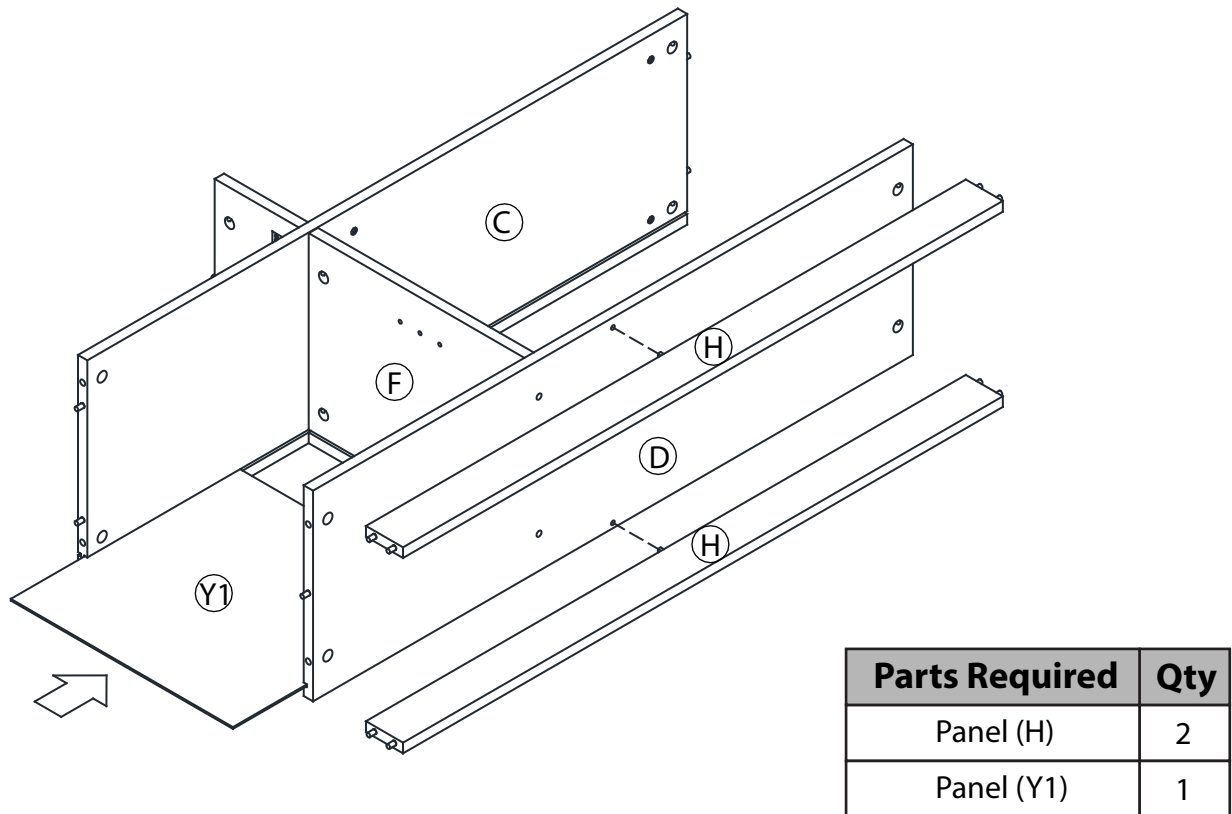


Parts Required	Qty
Panel (F)	1

**STEP 6**

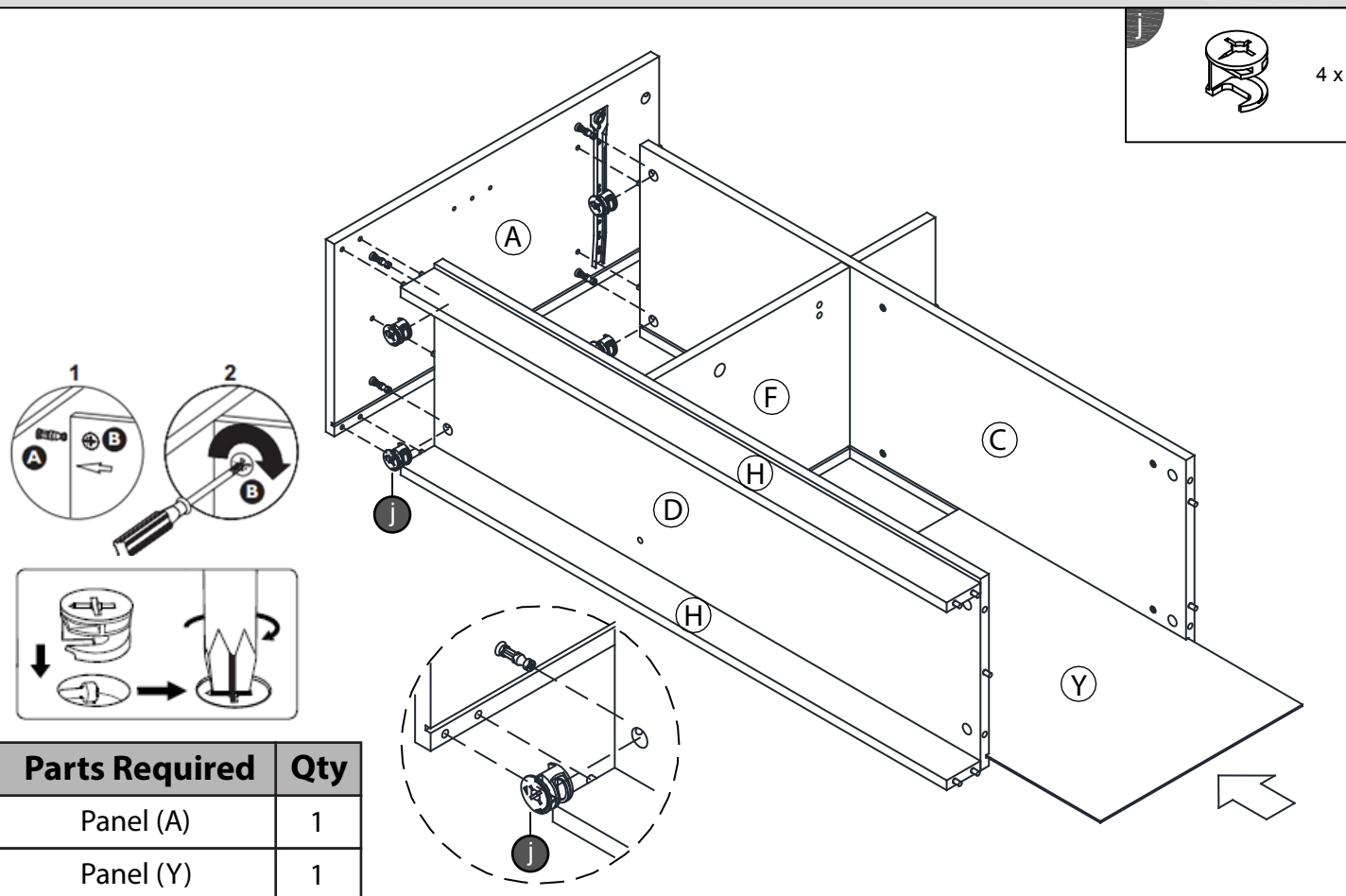


**STEP 7**

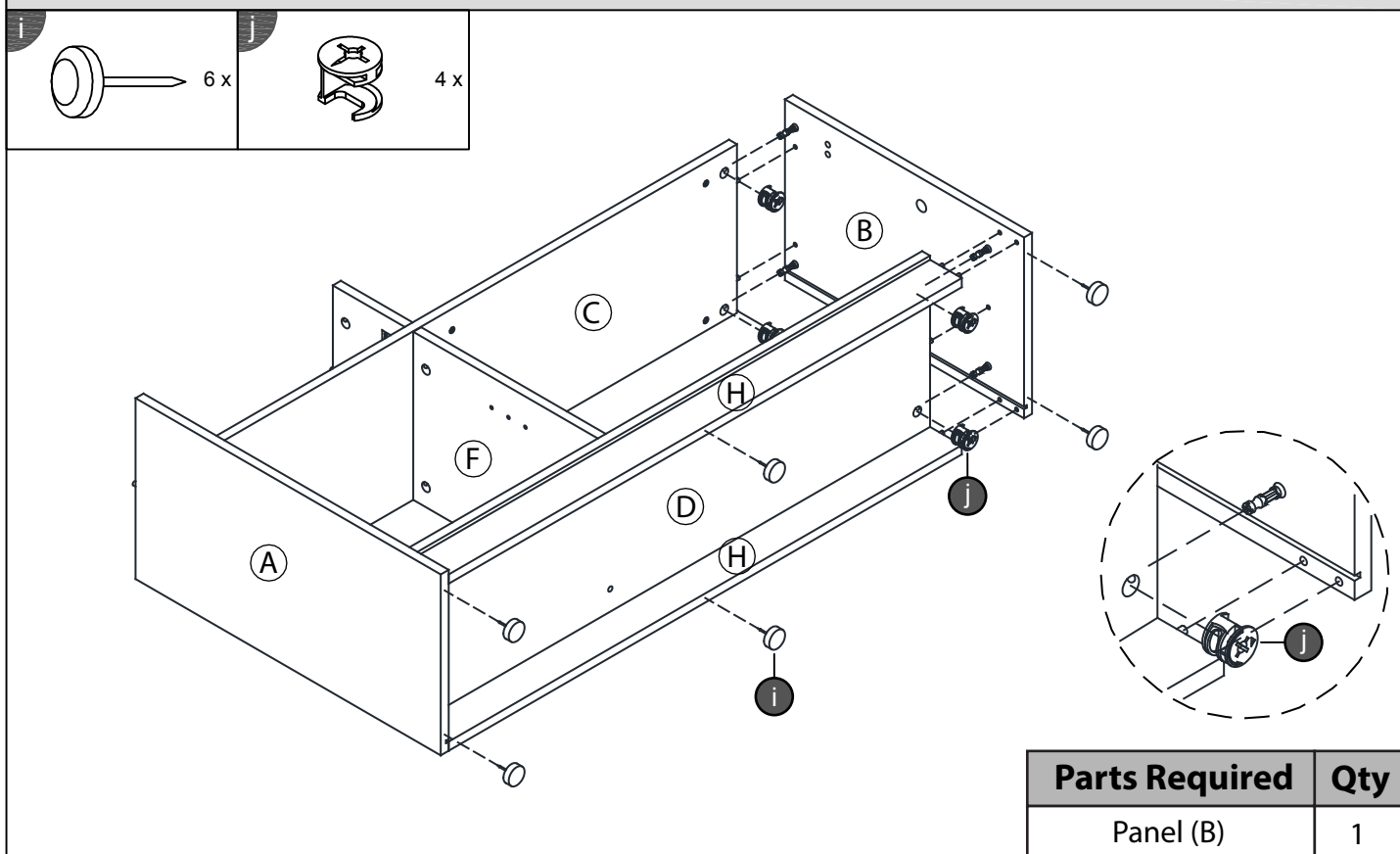




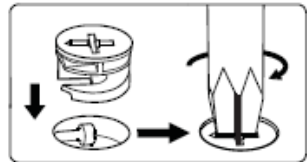
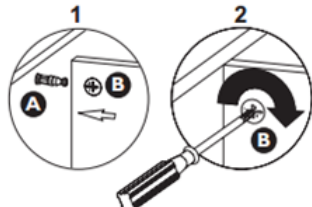
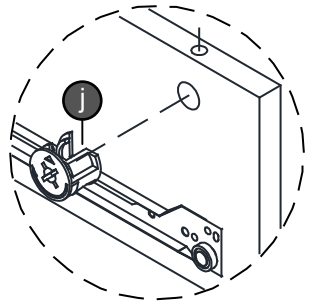
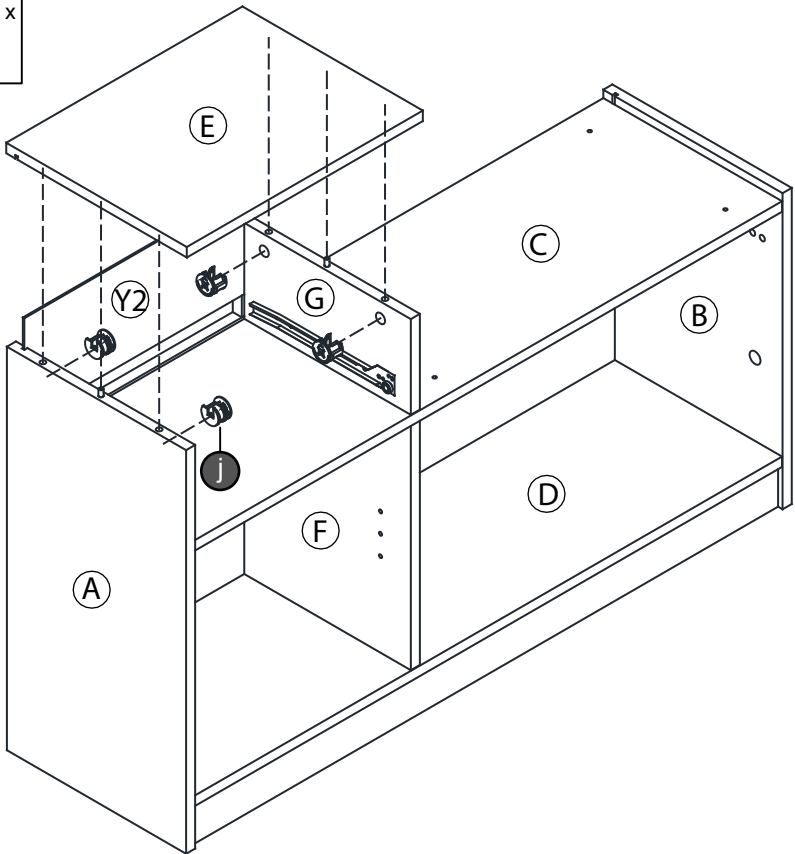
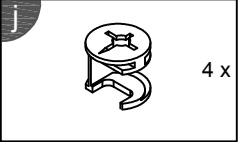
## STEP 8



## STEP 9

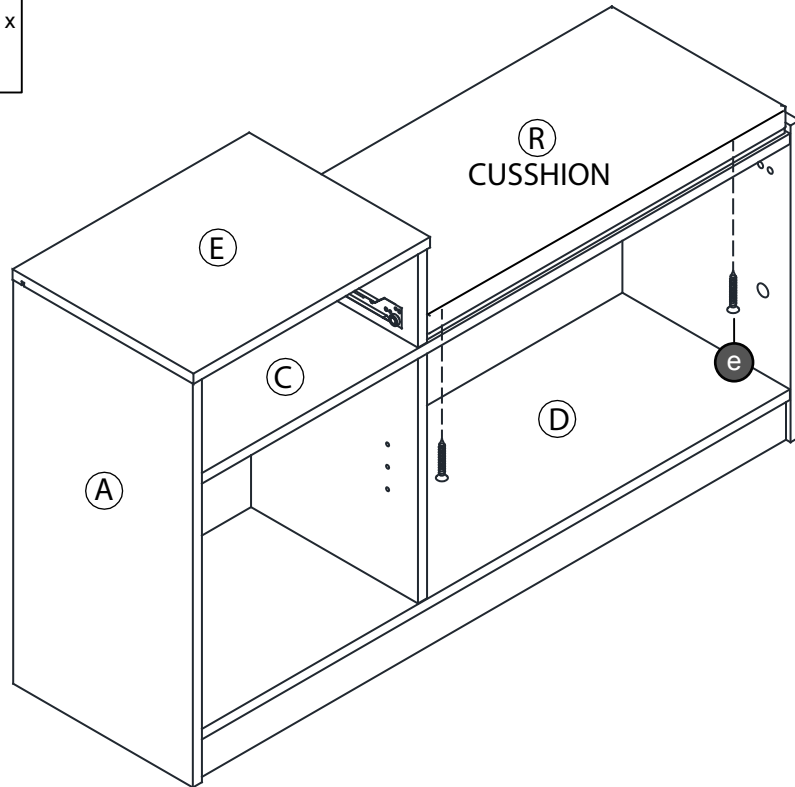
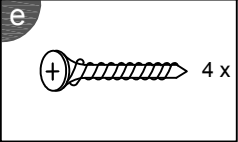


STEP 10



Parts Required	Qty
Panel (E)	1
Panel (Y2)	1

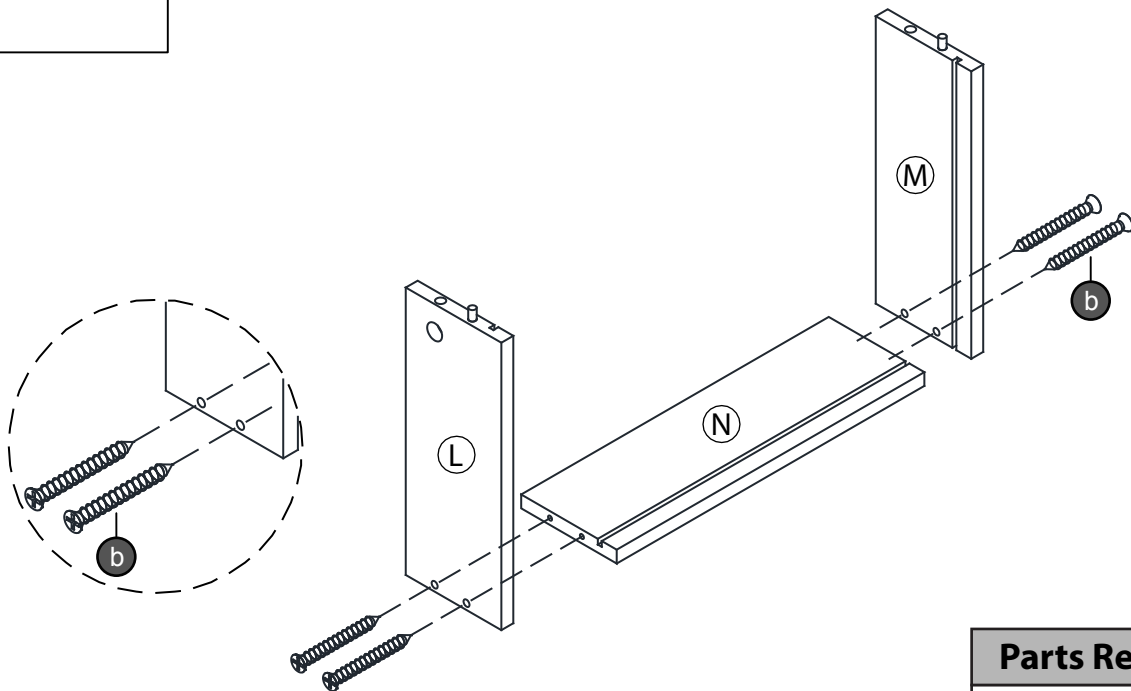
STEP 11



Parts Required	Qty
Panel (R) - CUSHION	1

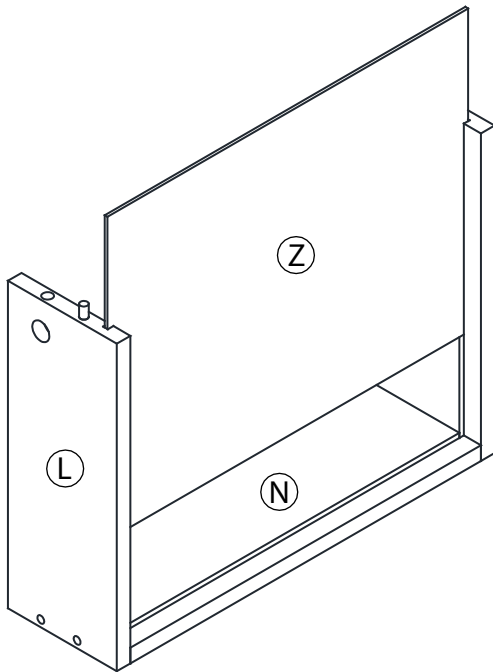
STEP 12

b



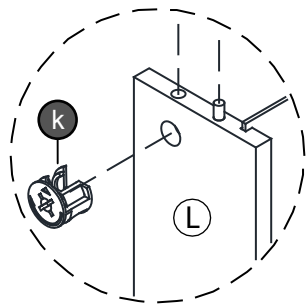
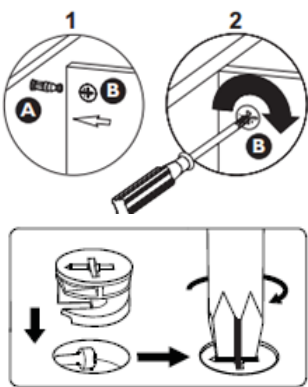
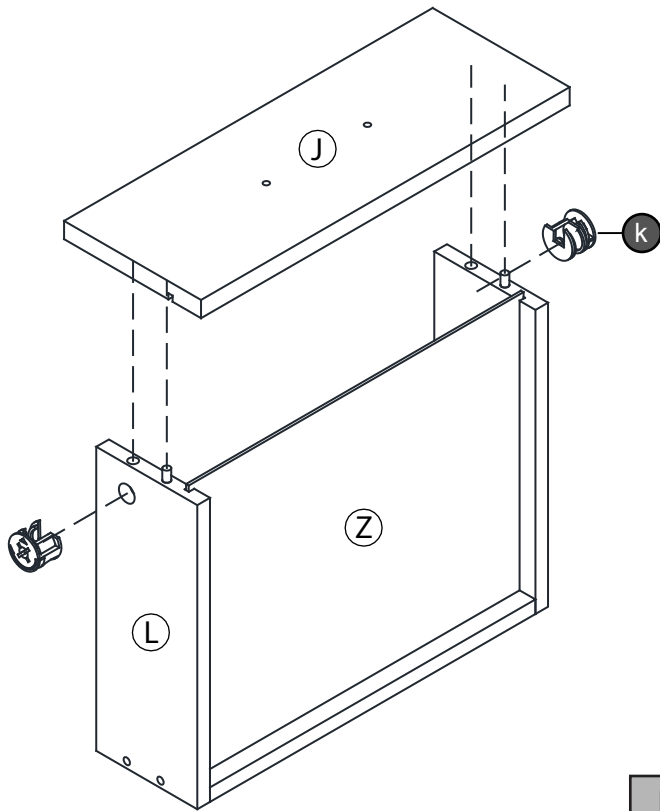
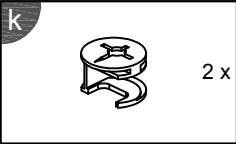
Parts Required	Qty
Panel (L)	1
Panel (M)	1
Panel (N)	1

STEP 13



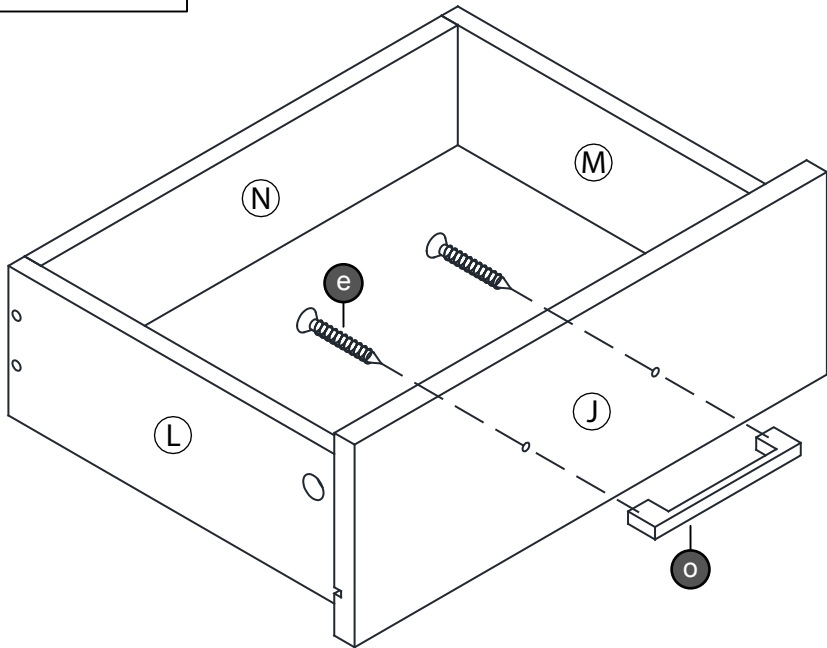
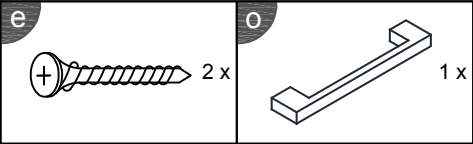
Parts Required	Qty
Panel (Z)	1

STEP 14

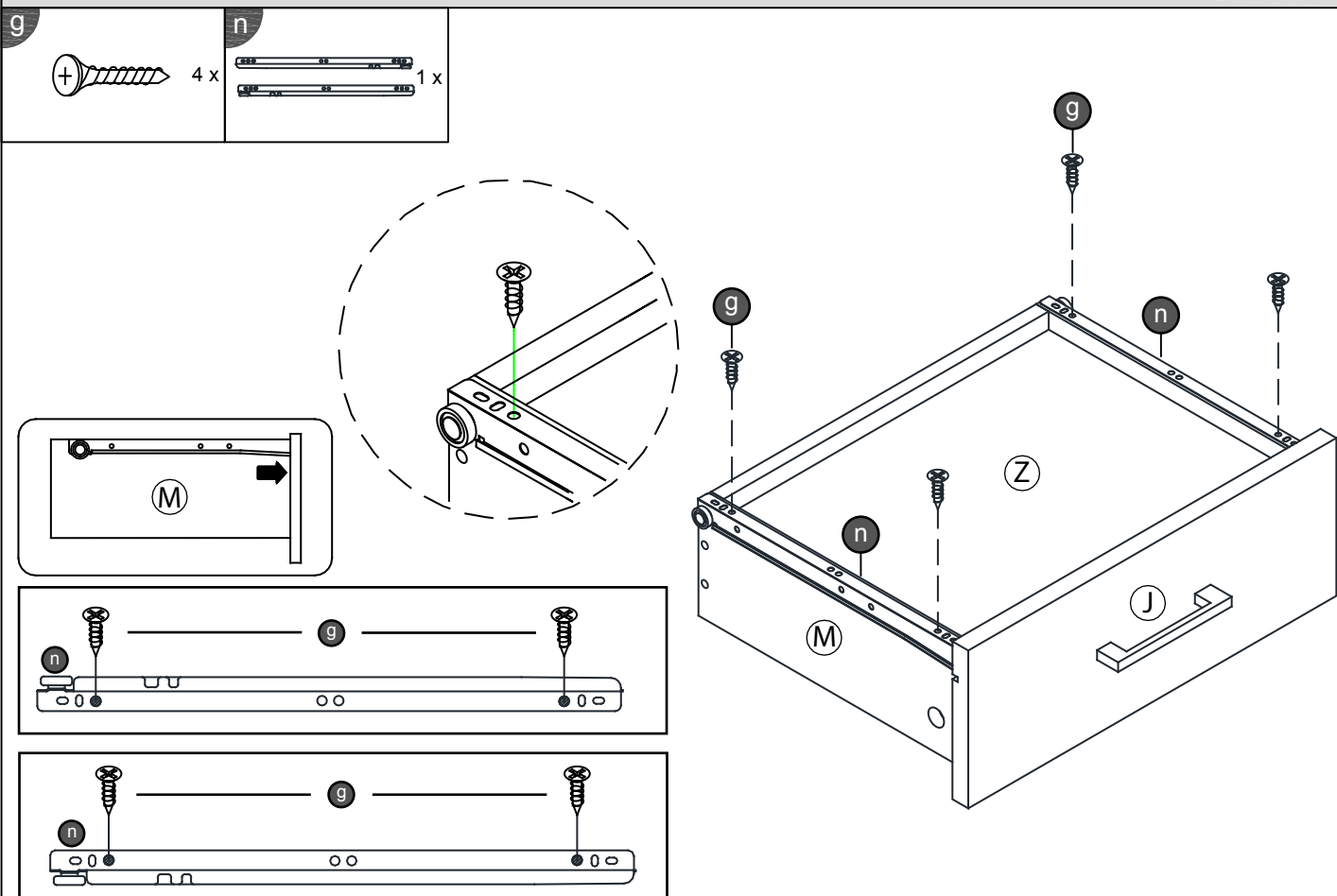


Parts Required	Qty
Panel (J)	1

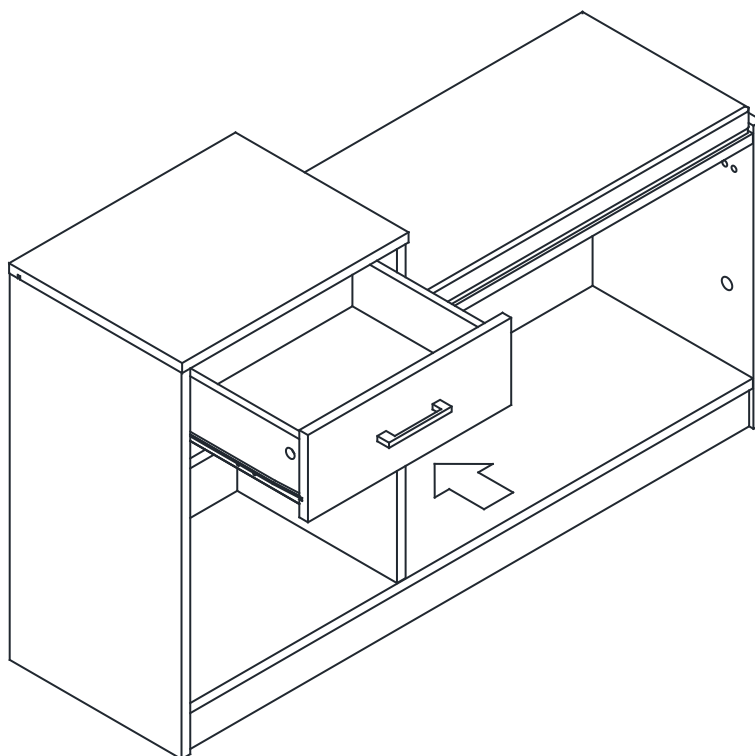
STEP 15



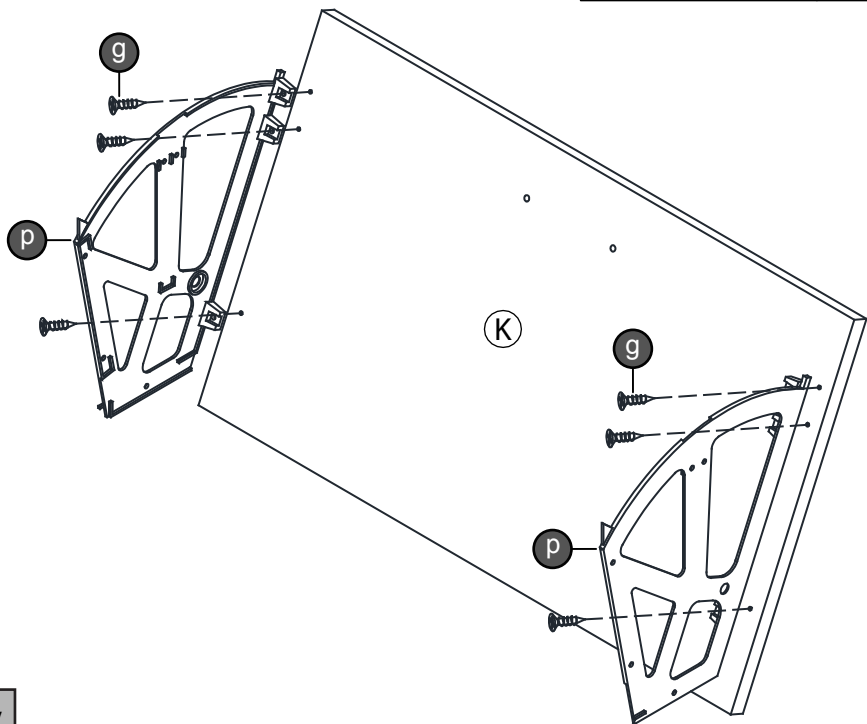
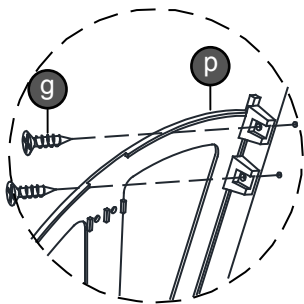
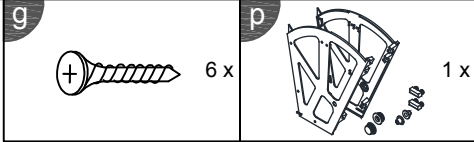
## STEP 16



## STEP 17

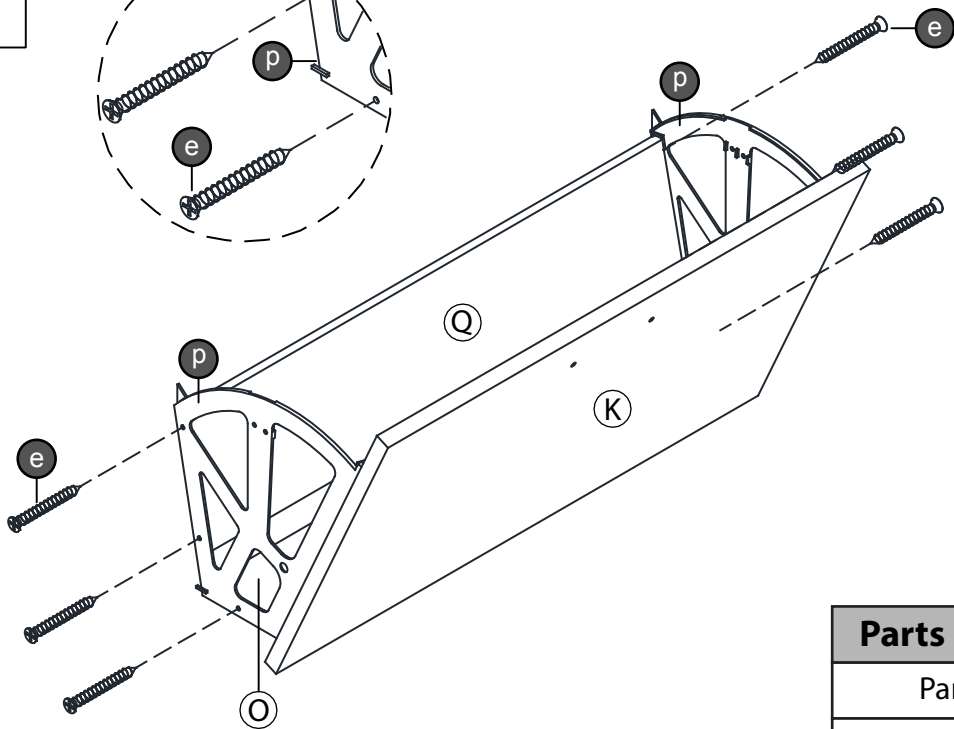
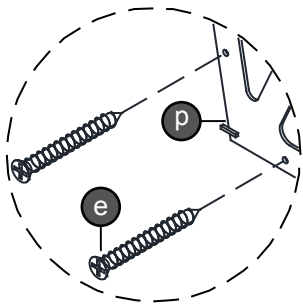
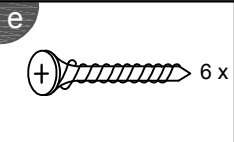


STEP 18



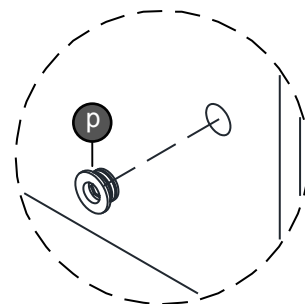
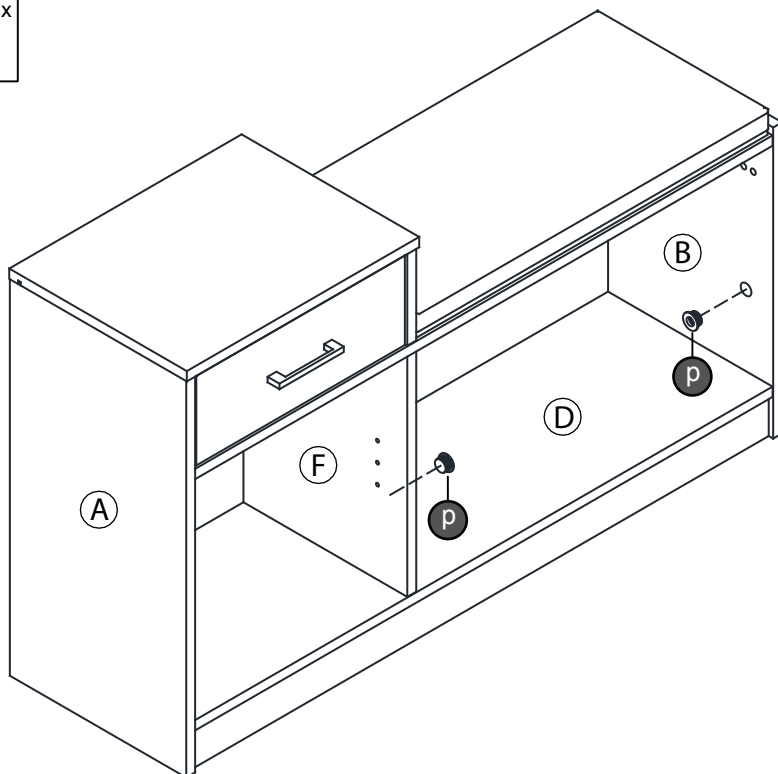
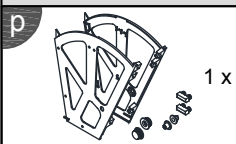
Parts Required	Qty
Panel (K)	1

STEP 19

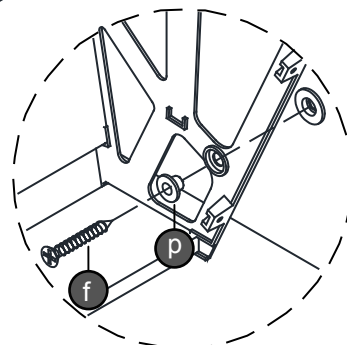
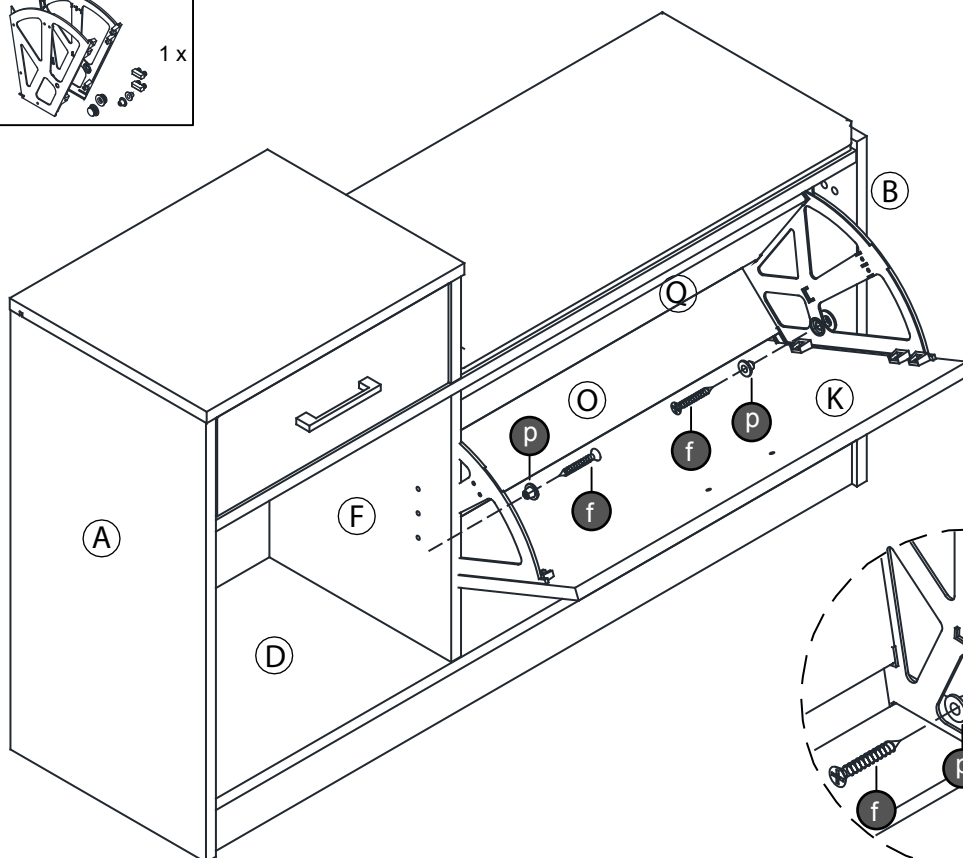
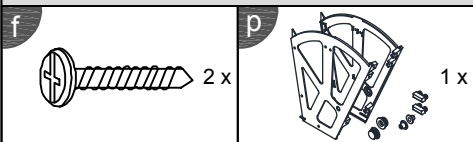


Parts Required	Qty
Panel (O)	1
Panel (Q)	1

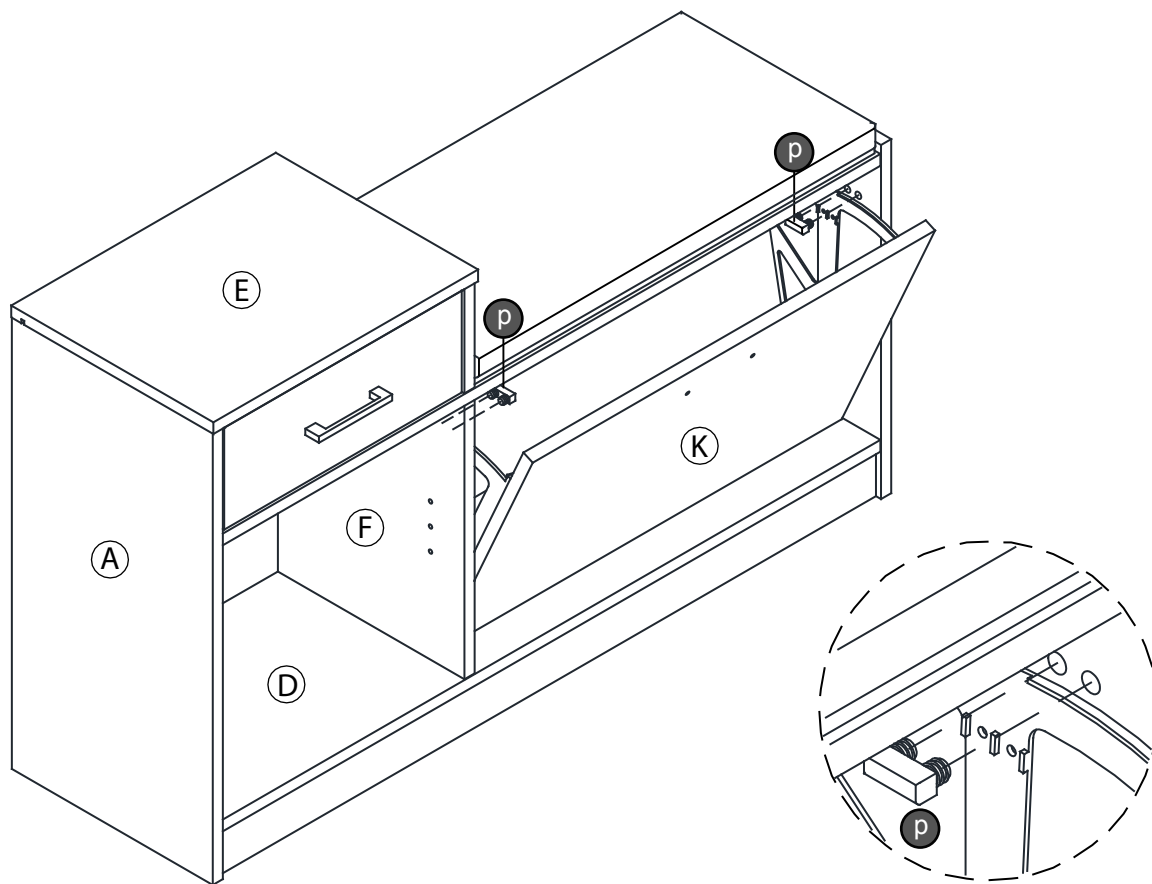
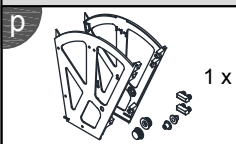
## STEP 20



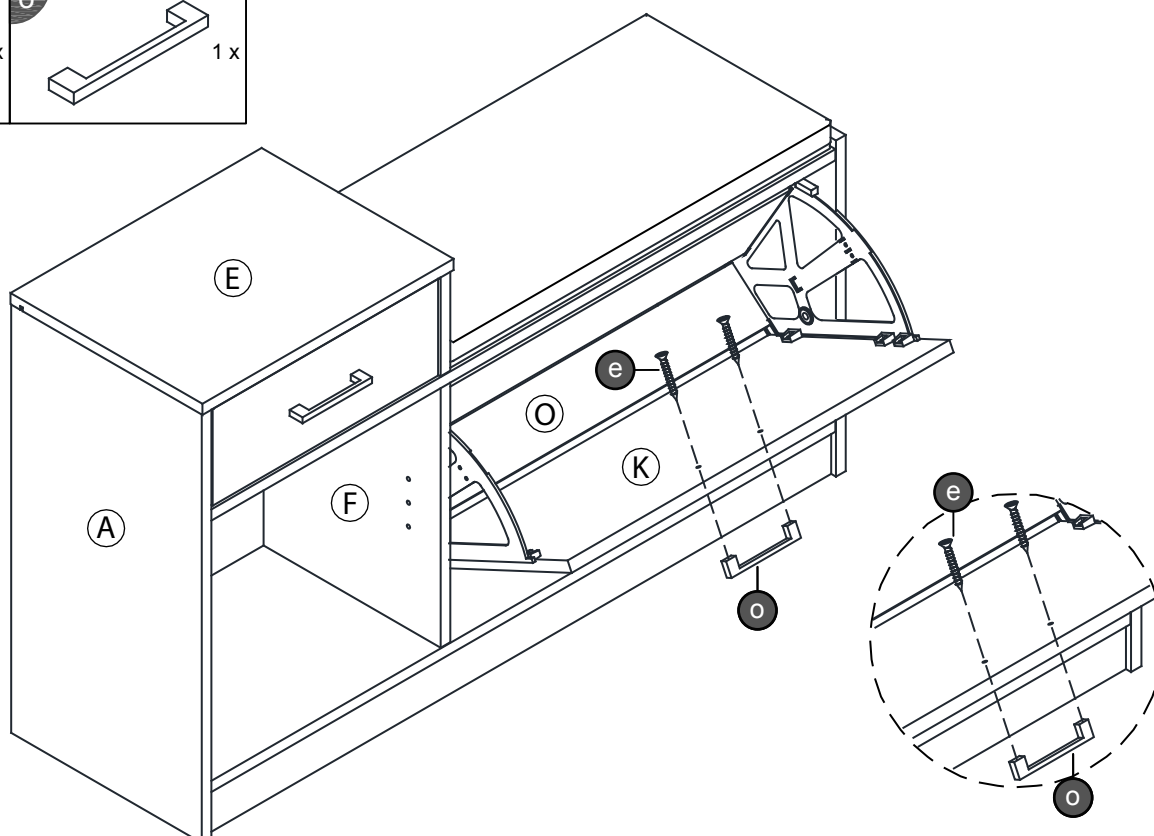
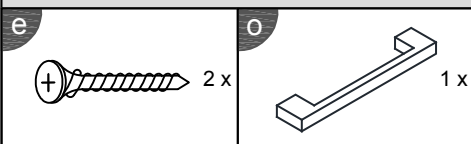
## STEP 21



## STEP 22



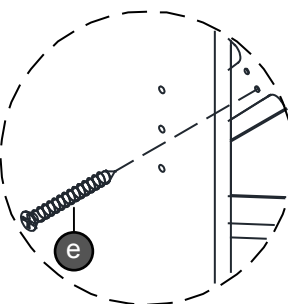
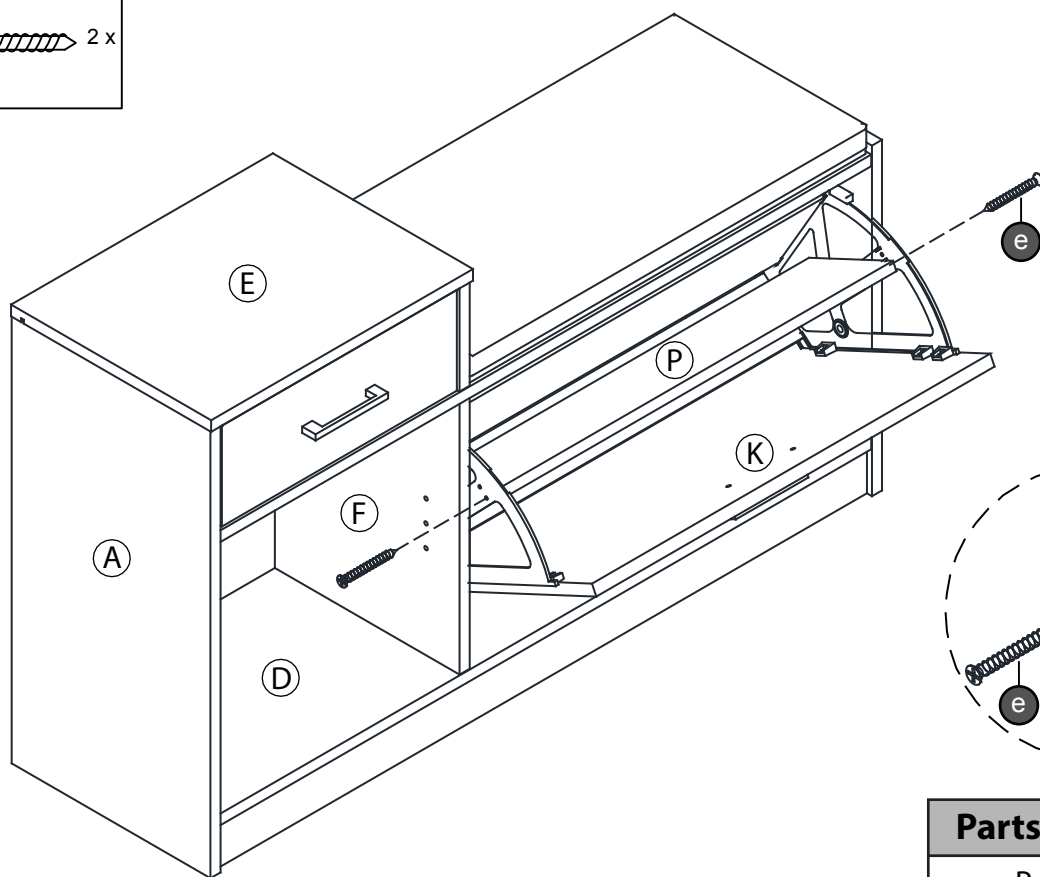
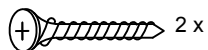
## STEP 23





STEP 24

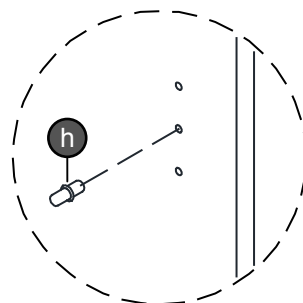
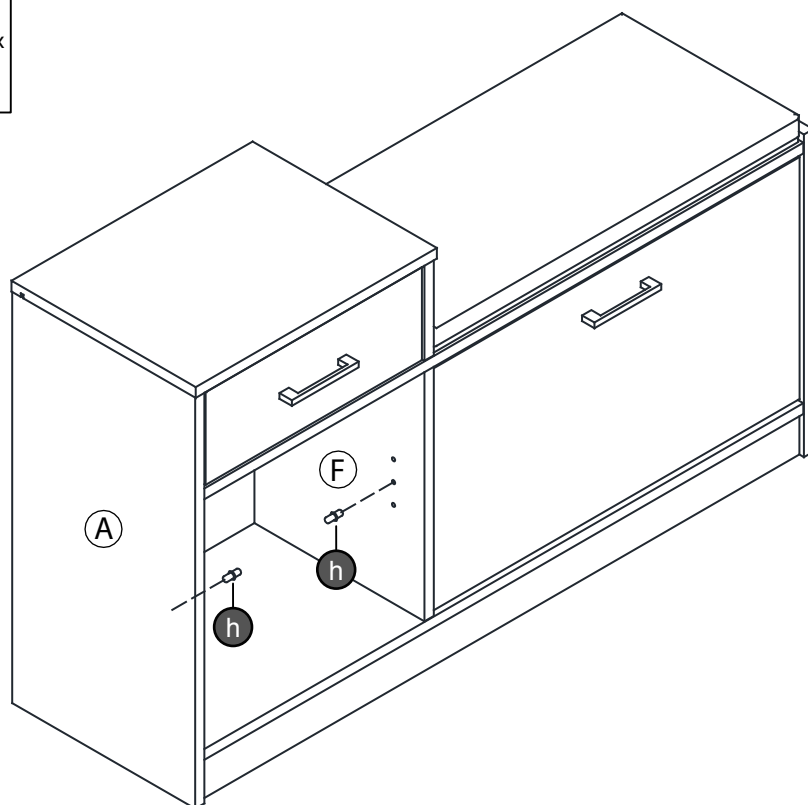
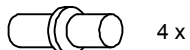
e



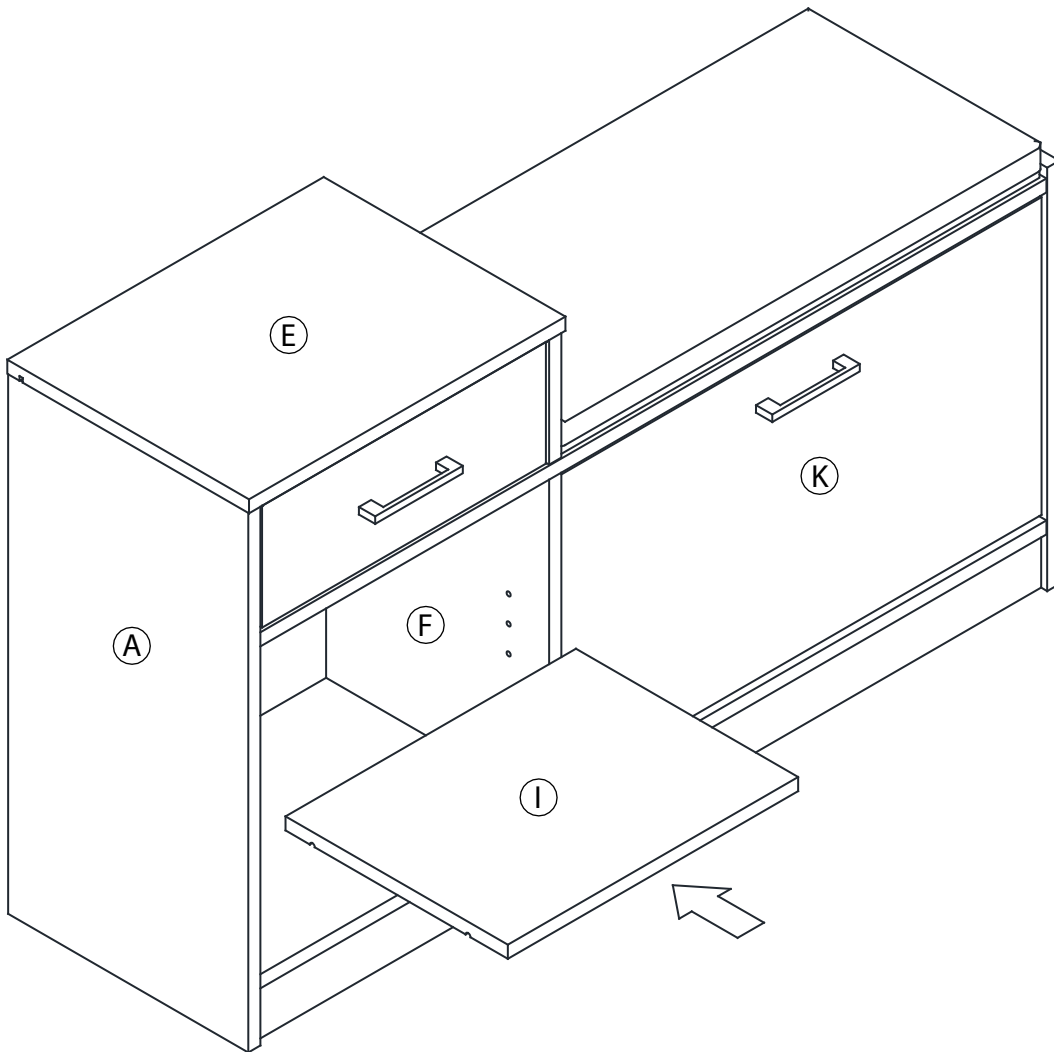
Parts Required	Qty
Panel (P)	1

STEP 25

h



**STEP 26**

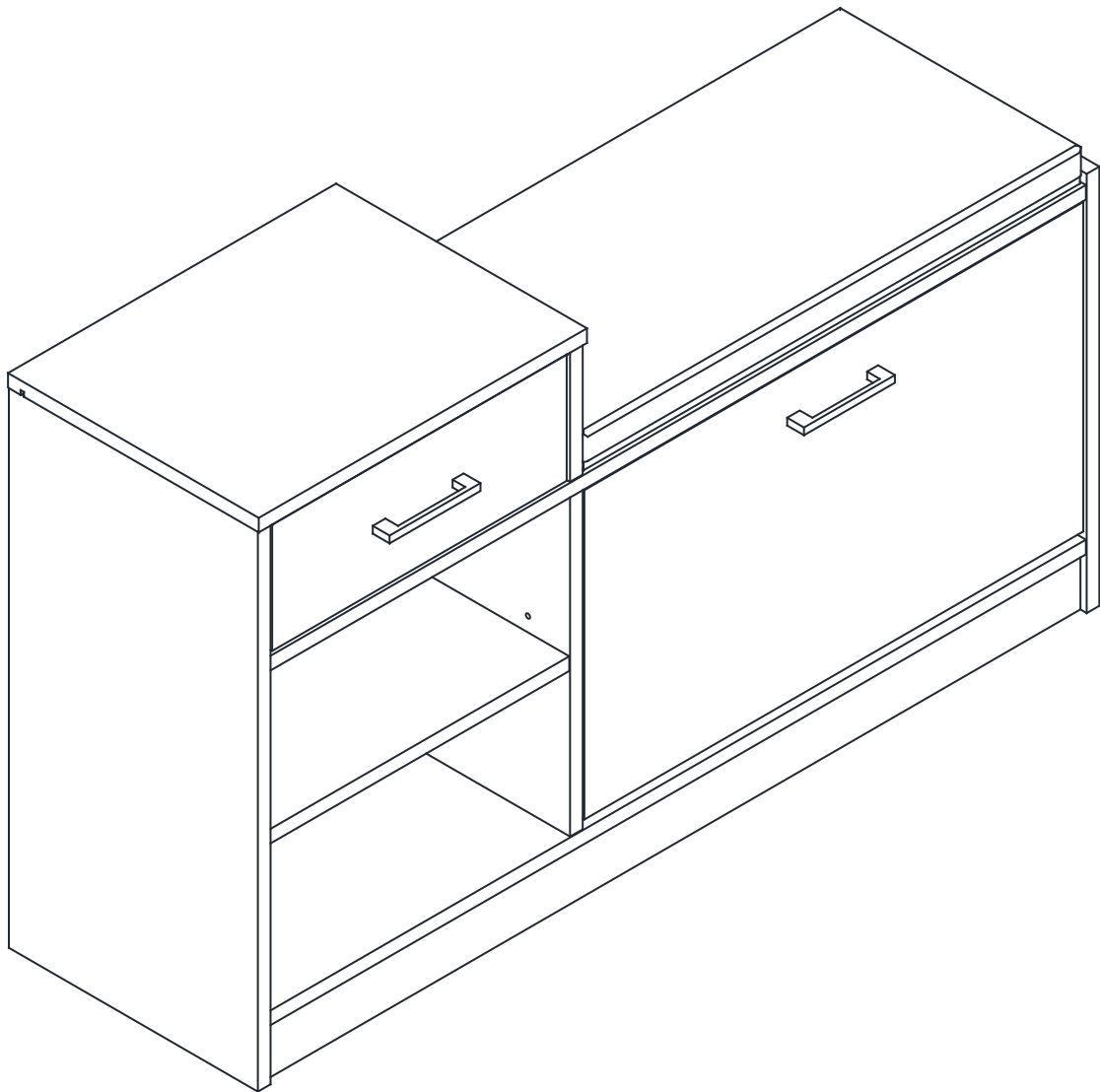


Parts Required	Qty
Panel (I)	1

## Complete Assembly

Your **SHOE BENCH with DRAWER** is now completely assembled

Periodically check to ensure that the components are in their proper position, free from damage. Also, make sure the connectors are tight and secure.



Keep instructions for future reference

